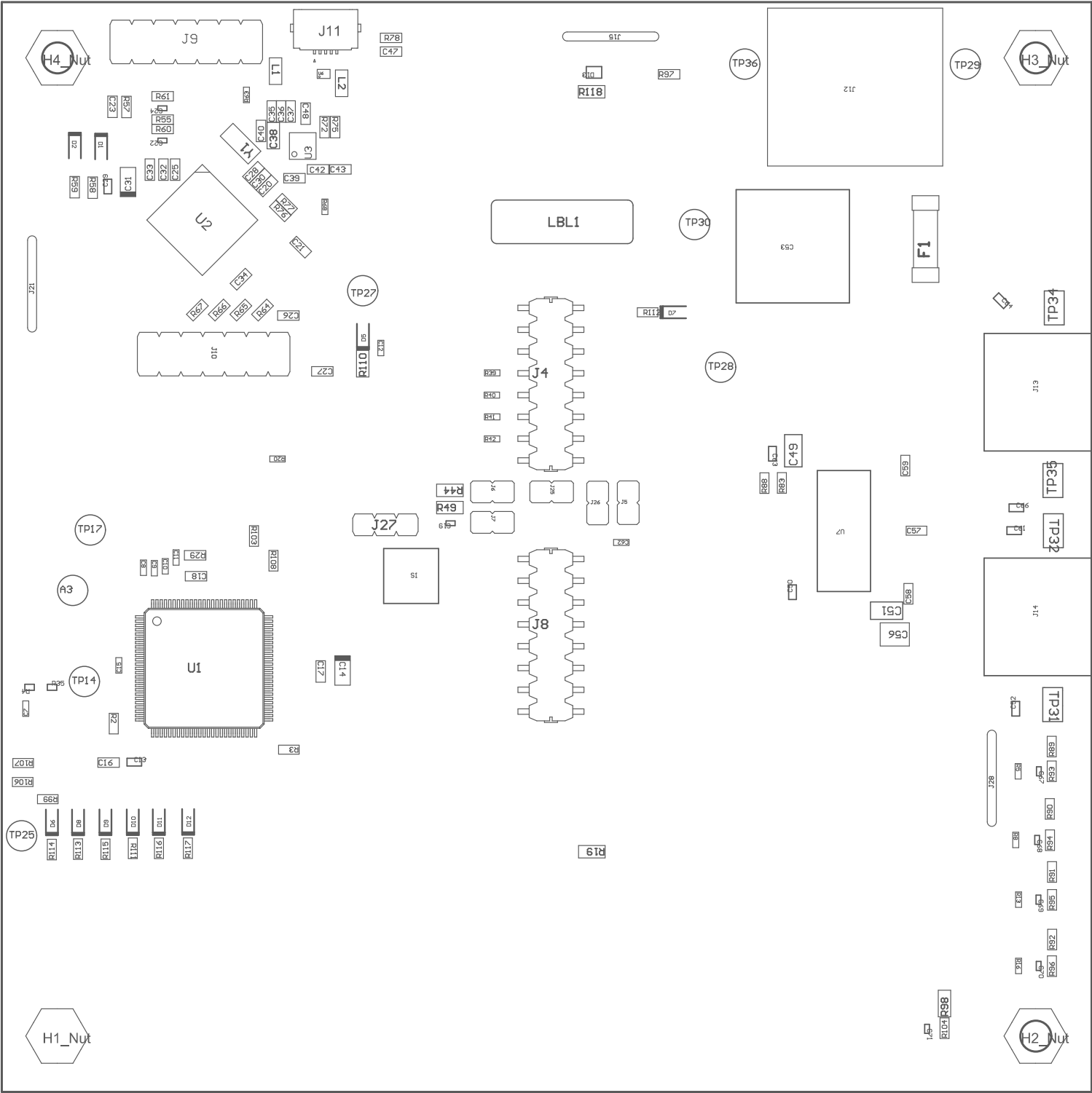
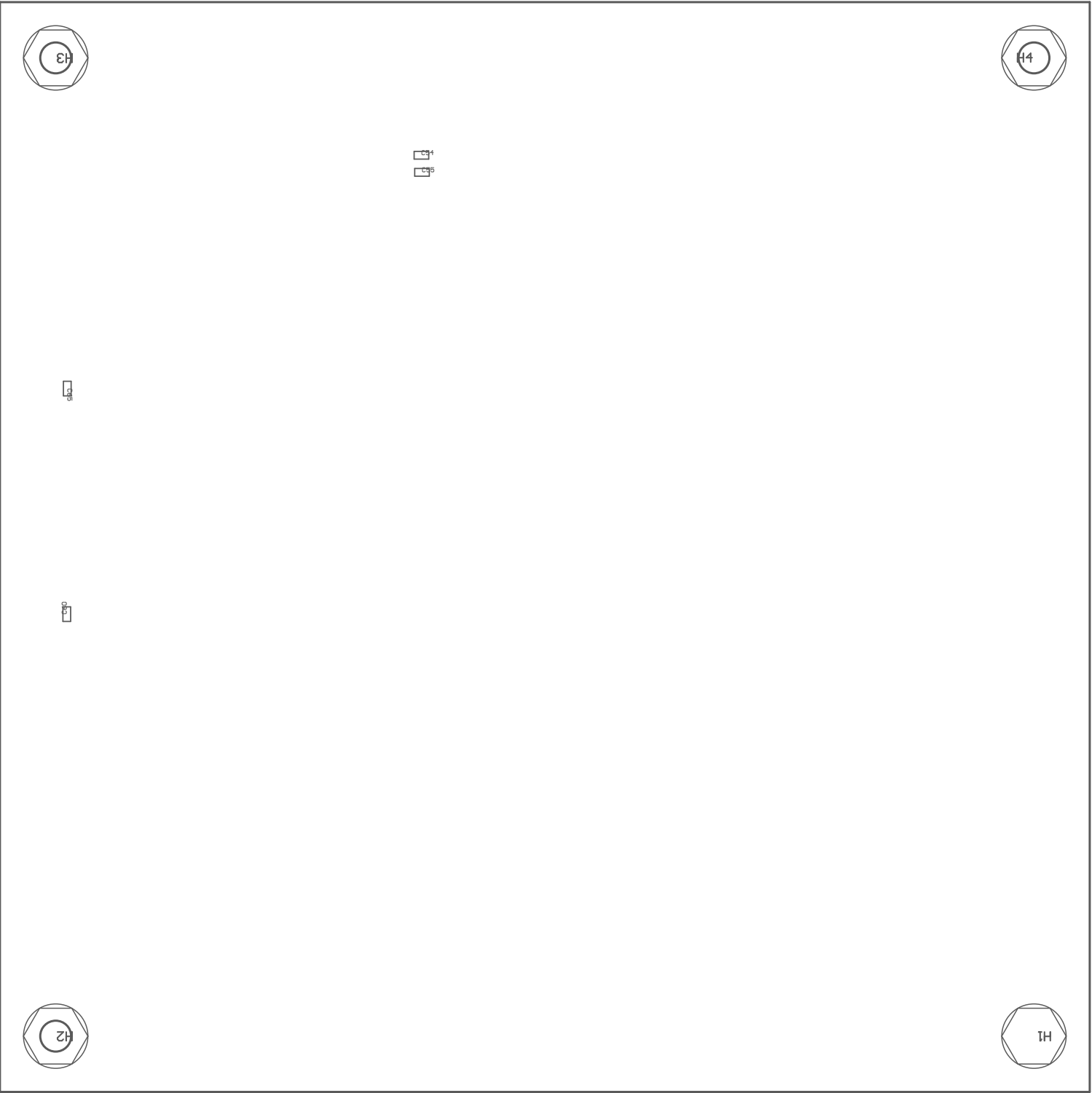


- Z21 ■Install label in silkscreened box after final wash. Text shall be 8 pt font. Text shall be per the Label Table in the PDF schematic.
- Z22 ■These assemblies are ESD sensitive, ESD precautions shall be observed.
- Z23 ■These assemblies must be clean and free from flux and all contaminants. Use of no clean flux is not acceptable.
- Z24 ■These assemblies must comply with workmanship standards IPC-A-610 Class 2, unless otherwise specified.



COMPONENTS MARKED 'DNP' SHOULD NOT BE POPULATED.
ASSEMBLY VARIANT: 007

PCB VIEWED FROM TOP SIDE	BOARD #: MD040	REV: A	SUN REV: 431c417b8a1bbecab286eb64d5dd4c382cb71ad5 [Modified]
	TID #: N/A		
PLOT NAME = Top Assembly Drawing	GENERATED : 12/6/2022 1:45:19 PM		TEXAS INSTRUMENTS



COMPONENTS MARKED 'DNP' SHOULD NOT BE POPULATED.
ASSEMBLY VARIANT: 007

PCB VIEWED FROM BOTTOM SIDE	BOARD #: MD040	REV: A	SVN REV: 431c417b8a1bbecab286eb64d5dd4c382cb71ad5 [Modified]
	TID #: N/A		
PLOT NAME = Bottom Assembly Drawing	GENERATED : 12/6/2022 1:45:19 PM		TEXAS INSTRUMENTS